

HAMMOND THEATRE PRESENTS



March 1, 2, & 3, 2018



Production Team

Director: **Lauren Tobiason**

Vocal Director: **Carolyn Bressler**

Conductor: **TJ Lukacsina**

Technical Director & Designer: **Donald Chiarella**

Choreographers: **Alex Krebs, Patricia Sullivan**

Assistant Director: **Patrick Burns**

Stage Managers: **Ahna Feldstein, Leslie Sparling**

Student Assistants: **Olivia Banks, Chinaza Ezeh, Daniel Quinter**

Costume Coordinators: **Keche Arrington, Shelby Waters**

We are grateful to the administrative and custodial teams for their essential support. We would also like to thank:

- ~ Jonathan Hawkins for sound assistance & Mr. T
- ~ Drew Dicus for on-stage drumming
- ~ Cami Wise & Savage United Methodist Church for loaning costumes
- ~ The Krehs, Leslie Gilbert, Shannon Nabors, & Jenn Marker for set-building assistance
- ~ Reservoir High School Theatre Department for loaning props
- ~ River Hill High School Theatre Department for loaning chairs & wigs
- ~ Jen McDonald & Rachel Quade for meal coordination
- ~ Flo's Costume Service for costume rentals
- ~ Gary's Prop Shop for prop rentals
- ~ Theatre department families for generously donating their time and energy
- ~ Aaron Tobiason for equally impressive graphic design, parenting, and support

In consideration of the performers and the audience, flash and cell phone use during the performance are prohibited. No food or drink is allowed in the auditorium (water is acceptable).

Please turn off all cell phones prior to the start of the show!

THE WEDDING SINGER

BOOK by
CHAD BEGUELIN & TIM HERLIHY

MUSIC BY
MATTHEW SKLAR

LYRICS BY
CHAD BEGUELIN

BASED UPON THE NEW LINE CINEMA FILM WRITTEN BY TIM HERLIHY
PRESENTED BY SPECIAL ARRANGEMENT WITH Music Theatre International

Act I

It's Your Wedding Day: Robbie, Band, Wedding Guests

Someday: Julia

Awesome: Robbie, Julia

A Note from Linda: Linda

Pop!: Holly, Angie, Julia, Wedding Guests, Restaurant Patrons

Somebody Kill Me: Robbie

A Note from Grandma: Rosie

Casualty of Love: Robbie, Wedding Guests

Come out of the Dumpster: Julia, Robbie

Today You Are a Man: Robbie, Band

George's Prayer: George

Not That Kind of Thing: Julia, Robbie, Clerk, Shoppers

Saturday Night in the City: Holly, Ensemble

- 15 MINUTE INTERMISSION -

Act II

All About the Green: Glen, Wall Street Executives

Right in Front of Your Eyes: Holly, Sammy

Single: Sammy, Robbie, Bar Patrons

If I Told You: Robbie, Julia

Let Me Come Home: Linda

Move That Thang: Rosie, George

Grow Old With You: Robbie, Julia

It's Your Wedding Day (Finale): Full Company

The Cast

ROBBIE	Hosea Mundi
JULIA	Emma Schreier *
	Katie Rees **
HOLLY	Lexi Wakefield *
	Kayla Sharp **
SAMMY	Joshua Olujide
GEORGE	Kaylee McDonald
GLEN	Carlos O’Ryan
LINDA	Rachel Wattanarungsikajorn *
	Ella Martin **
ROSIE	Olivia Irby *
	Ina O’Ryan **
ANGIE	Kayelee Wisdom
MOOKIE	Isabelle Dyson
CRYSTAL	Grace Quade
CLERK	Hanaa Omran
DAVID	Zach Lee
RICKY	Naw Share
BUM	John White
DEBBIE (1ST BRIDE)	Anna Tache
HAROLD (1ST GROOM)	Naw Share
BILLY IDOL IMPERSONATOR	Alex Holtz
CYNDI LAUPER IMPERSONATOR	Isabelle Dyson
MR. T. IMPERSONATOR	Kenneth Apana-Korley *
	Mr. Hawkins **
TINA TURNER IMPERSONATOR	Krista Adu-Osei
IMELDA MARCOS IMPERSONATOR	Mary Moe
RONALD REAGAN	Danny Quinter

*Thursday and Saturday evening

**Friday evening and Saturday matinee

The Cast

GLEN'S SECRETARY	Terra O'Rourke
BAD HAIRCUT GUY	Isaiah Olujide
LOSER GUY	Kenneth Apana-Korley
SIDEBURNS GIRL	Sarah Meklir
HUNGRY LADY	Danielle Gilbert
1ST WAITER	Amika Smart
2ND WAITER	Kayla Hendershot
DONATELLA McDONOUGH	Sydney Woodward
SHANE McDONOUGH	Krupal Patel
DONATELLA'S MOTHER	Jordan Kreh
TIFFANY	Samantha Kargbo
DONNY	Alex Holtz
AIRLINE AGENT	Kristina McKirahan
PRIEST	Evan Jacobs

Ensemble

Kofi Adu-Gyamfi	Macaria Knox
Randi Anderson	Katherine Lopez
Emilia Azurmendi	Jillian Mason
Isabel Berry	Sophia Moyer
Chloe Booher	Emily Paz
Sera Chase	Sydney Phillips
Ana Coman	Zoe Sanders
Riley deLeeuw	Logan Seely
Leah Fasig	Skylar Shaffer
Sydney Finger	

Understudies

ROBBIE	Isaiah Olujide
SAMMY	Kenneth Apana-Korley
GEORGE	Terra O'Rourke
ANGIE	Isabel Berry
GLEN	Logan Seely

The Crew

Costumes

Hallie Benda
Jenaye Brooks-Rivers
Morgan Kenney
Katie Mason
Vi Nguyen

Lights

Jaeden Arrington (Head)
Ana Davis
Cameron Jones
Claire O'Rourke
Noel Cordier
Isabel Sinnott
Kelly Wagner
Ben Rafael
Yusuf Khalid
Ali Khalid
Ben Yodzis (Head)

Sound

Crista Falco
David Garvey
Sarah Horton
Jade Smith (Head)
Ram Par
Madison Woodward

Construction/Paint

Bilal Akbar
Marita Asamoah
Emilia Azurmendi*
Nia Bronson
Kaiya Bumbray
Amber Cai
Caderyn Delker*
Eric Hryniewicz*
Lyndsay Katz*
Liya Kebede
Nana Korsah*
Andrew Lee
Rachel Osei
Bhumi Patel
Jason Premo*
Caleb Salem
Molly Schreier*
Kim Taylor
Caroline Waak
Yuki Yashiro
Ada Wang*

*denotes shift crew

SHOUT OUTS!

"We have different lives and faces, but our hearts have common places"-
Ragtime For Danny

Many thanks to Isabelle Dyson & Joshua Olujide for their wonderful small-group choreography!

Many thanks to Becky McKirahan & Leslie Gilbert for costume alterations & shirt printing.

The Orchestra

Conductor
Keyboard 1
Keyboard 2
Keyboard 3
Guitar 1
Guitar 2
Guitar 3
Bass Guitar
Oboe/English Horn
Alto Sax
Tenor Sax/Clarinet
Trumpet 1
Trumpet 2
Drum Set
Auxiliary Percussion

Mr. TJ Lukacsina
Carolyn Bressler
Cory Larsson
Ellie Whittenberger
Chris Sisson
Timothy McGowan
Joseph Terrasa
Eli Cohen
Daniela Ruiz Perez
Charlie Schneider
Jenna Dietrich
Leslie Sparling
Natalie Ward
Nathan Dufresne
Tom Berkheimer



Grace Quade



Bloogie

Meatball

Hey Girl Hey

Julie Chen, It's official.

Break a Leg, CC

Have Fun, We Love You, Aunt Cathy & Aunt Jenny

Biographies

KRISTA ADU-OSEI (Tina Turner Impersonator/Ensemble) is a freshman. This is her very first production and she is very excited!

EMILIA AZURMENDI (Ensemble) is excited to participate in her second show at Hammond. She is looking forward to performing in future shows.

ISABEL BERRY (Ensemble) is a sophomore at Hammond High and is very excited to be involved with *The Wedding Singer*. She has been in a few plays and has helped with the set design. She hopes that you enjoy the show!

CHLOE BOOHER (Ensemble) is a Sophomore and is so excited to be apart of her second production here at Hammond High School. Chloe would like to thank her parents and friends for supporting her on this adventure.

SERA CHASE (Ensemble) is a sophomore at Hammond High School. She is excited to perform the choreography in her first musical production at Hammond.

ANA COMAN (Ensemble) is a freshman at Hammond High. She enjoys playing soccer and hanging out with friends, and she is very excited to sing and dance in *The Wedding Singer*.

RILEY DE LEEUW (Arnold/Ensemble) is very excited to work in the Wedding Singer. Off the stage, he enjoys sports, video games, reading, and a good joke every now and then.

ISABELLE DYSON (Mookie/Cyndi Lauper Impersonator) As a senior, this is Isabelle's final show at Hammond. She has loved participating in all of the shows, from Bird Girls to a Steam Heat Dancer to the Tornado. She has loved every moment of participating in theatre, and would like to thank her parents, the Mijas for making every experience memorable, and this year's amazing cast!

CHINAZA EZEH (Assistant Director) is happy to be involved in this hilarious and heartwarming show with such hilarious and heartwarming people. She hopes you enjoy the show!

LEAH FASIG (Ensemble) is very excited to be participating in her first theater production at Hammond, and grateful to all of her castmates for making it such a wonderful experience.

AHNA FELDSTEIN (Stage Manager) is very excited to be on the production team for *The Wedding Singer*, which is her second production as Stage Manager. She has worked on various productions such as *Arsenic and Old Lace*, *The Pajama Game*, *The Good Doctor*, *The Wiz* and *Twelve Angry Jurors*, and would like to thank her parents for initiating her love of theatre.

SYDNEY FINGER (Ensemble), a freshman, is enthusiastic to be performing with the Hammond High Theatre for the first time. Sydney has been in a few plays before and wants to thanks her friends and family for their support.

DANIELLE GILBERT (Hungry Lady/Ensemble) is a freshman this year. She loves reading, writing, singing, and acting. Her favorite way to spend a Saturday is sleeping, watching Netflix, and cuddling with her cat.

KAYLA HENDERSHOT (2nd Waiter/Ensemble) is a 10th grader at Hammond and played volleyball for Hammonds JV team. She has been in a few plays in elementary school, and is excited to get back into theater with *The Wedding Singer*!

Biographies

ALEX HOLTZ (Donny/Billy Idol Impersonator/Ensemble) is excited to be involved in his fourth Hammond Musical Theatre production. Starting as a cellist in the pit band in his first two shows before moving to the stage, he is glad to have gotten to know everyone and hopes his final show at Hammond will be an excellent one.

OLIVIA IRBY (Rosie) is a senior. She is excited and sad to be in her last Hammond musical. She is thankful for the cast, crew and production team for putting on such a great show. She loves theater and hopes to continue it in college. She hopes you enjoy the performance as she moves that thang!!!

JORDAN KREH (Donatella's Mother) is a sophomore who loves the theatre family at Hammond. Shout-out to everyone who has supported her throughout the rehearsal process and made this production a success. Enjoy the show!

ZACH LEE (David/Ensemble) is very excited to be performing in his first show ever. He has previously played violin in the pit and would like to thank everyone who came to watch.

KATHERINE LOPEZ (Ensemble) is very excited for her first onstage musical performance. She loves to sing and loves to play the piano. Lastly, she enjoys spending time with her family.

ELLA MARTIN (Linda) is very excited to be in *The Wedding Singer*. She loved being in *Twelve Angry Jurors*, and she can't wait to be in other shows. She would like to thank the theater department.

KAYLEE McDONALD (George) This is Kaylee's first musical at Hammond, and she is happy to be apart of such a fun cast! She would like to thank her family for coming.

KRISTINA MCKIRAHAN (Airline Agent/Ensemble) is so excited to be doing her first musical at Hammond as a freshman. She is grateful to be a part of such a amazing crew and make new friends!

SARAH MEKLIR (Sideburns Lady/Ensemble) is a freshman at Hammond, and is excited to be taking part in her second production. She hopes everyone enjoys the show!

MARY MOE (Imelda Marcos Impersonator/Ensemble) is a freshman who is excited to be participating in a musical production at Hammond. She would love to say "Hello, how've you been?" to everyone watching.

SOPHIA MOYER (Ensemble), a senior at HaHS, has been in the tech crew for Hammond's productions of *Seussical the Musical*, *The Pajama Game*, and *The Wiz*. She is thrilled to be in *The Wedding Singer* as a first time cast member! Fusing her love of musical theatre with her love for performing has been a dream come true. Immeasurable love to her family.

HOSEA MUNDI (Robbie) This is Hosea's fourth and last Hammond high school musical production. Hosea is both happy and sad that he was given the opportunity to lead his last musical. He's going to miss working with this wonderful cast and crew. In the future he dreams of studying film in California and becoming a film director/actor.

JOSHUA OLUJIDE (Sammy) This is Joshua's last show at Hammond High School. As he tries not to cry while typing this, he would like to thank his fellow cast/crew members for putting up with him for 2 years, and you lovely audience members for watching him fulfill his dreams. Now prepare to laugh, cry, and enjoy the show!

Biographies

HANAA OMРАН (Clerk/Ensemble) is a senior this year and is excited to be doing *The Wedding Singer* for her last show here at Hammond. Hanaa has been in the shows, both plays and musicals, since the freshman year and is excited to finally have a role with a solo for her final year

TERRA O'ROURKE (Glen's Secretary/Ensemble) is excited to have an acting role in her first musical production and she is happy that she gets to work with many fun, talented peers.

CARLOS O'RYAN (Glen) is a sophomore who is very excited to be playing such a deplorable character in his first musical at Hammond, especially since it follows his portrayal of a racist in his first play.

INA O'RYAN (Rosie) is a senior and is thrilled to be in her third show here at Hammond! She enjoys being a part of theatre on and off stage by also playing cello in pit for community theatre. Ina is grateful to have been a part of Hammond theatre and thanks the production team and cast members for making her feel at home.

KRUPAL PATEL (Shane McDonough/Ensemble) is playing the character of Shane in *The Wedding Singer*. He is thrilled and excited to be back in theatre after acting in *The Good Doctor*.

EMILY PAZ (Ensemble) This is Emily Paz's first time in a musical! She is very honored to be partaking in this wonderful show:)

SYDNEY PHILLIPS (Ensemble) is a sophomore this year, and participated in the musical last year. She's enjoyed making friends and conversing with her cast mates, and thankful for those involved in this production.

GRACE QUADE (Crystal/Ensemble) is excited to be participating in this production. She has previously been in many other productions both inside and outside of school. She gives thanks to her family, cast/crew, and friends!

DANNY QUINTER (Assistant Director/Ronald Reagan Impersonator) is thrilled to experience his first foray off the stage as assistant director. He has acted in five previous Hammond theatre productions and can't wait to return to the stage.

ZOE SANDERS (Ensemble) decided to audition for the musical due to her love of dancing and singing. This is Zoe's first production in years.

SKYLAR SHAFFER (Ensemble) This is my first year at Hammond and in the musical, so far I am loving it!

NAW SHARE (Groom 1/Ricky/Ensemble) is a Junior performing in his second musical. He plays the role of the bride's groom in Act 1 and Ricky. Enjoy the show.

EMMA SCHREIER (Julia) is a senior who is super excited to be a part of *The Wedding Singer*! Emma began her Hammond Theatre career in the pit freshman year and is thrilled to now play Julia. Emma would like to thank her family, dog Ginny, friends, the music teachers, and Mrs. Tobiason for everything. Thanks also to her relatives for coming out to support her! Enjoy the show!

Biographies

AMIKA SMART (First Waiter, Ensemble) This is Amika's third Hammond Theatre Production, but her second musical production. She is happy that she had this amazing opportunity to be a part of this show. She is going to miss this a lot next year when she goes off to college. Amika would like to thank everyone who has supported her through this journey!

JADE SMITH (Sound Head) is excited to be doing sound for her third and final year and sixth Hammond theatre production. Theatre has been a wonderful opportunity for Jade to challenge herself and work outside of her comfort zone. She has made many friends in the theatre community and has gained memories from theatre that will be cherished in life.

LESLIE SPARLING (Stage Manager) has been involved in theatre for 4 years and will miss it deeply. She has worked on running crew for *Almost, Maine*, *Seussical*, *Arsenic & Old Lace*, and *The Pajama Game*. On top of stage managing for *The Good Doctor*, *Twelve Angry Jurors*, and *The Wedding Singer*, she has played in the pit band for *The Wiz* and *The Wedding Singer*. She can always be found in the theatre department!

ANNA TACHE (Debbie Fonda/Ensemble) This is Anna's second show acting with Hammond Theatre. As a sophomore, she is excited for what the next 2 years have to bring! She is very grateful to be able to be part of such an incredibly talented cast and crew of an amazing show!

LEXI WAKEFIELD (Holly) is feeling bitter-sweet for her last musical production at Hammond. Previously you may have seen her in *Twelve Angry Jurors* (Eleven), *The Wiz* (Evillene), *The Good Doctor* (Mistress), and *The Pajama Game* (Poopsie). She is thankful to be part of such an accepting cast, and hopes you will enjoy the show right in front of your eyes ;).

RACHEL WATTANARUNGSIKAJORN (Linda) is thrilled to be spending her last year at Hammond with such a exciting production. She has previously been cast as Mayzie la Bird (*Seussical the Musical*), a featured Steam Heat Dancer (*The Pajama Game*), and Evillene (*The Wiz*). Being a part of Hammond Theatre has expanded Rachel's love of the stage, and she hopes to continue in college.

JOHN WHITE (Bum/Ensemble) is John has been very active in musical theater since the third grade. He's very excited to see how the show turns out and he hopes you'll have a lot of fun.

KAYELEE WISDOM (Angie) Welcome! Kayelee is a Senior and has been in multiple productions. Her most recent being Juror 9 in *Twelve Angry Jurors*. She enjoys video games, music and singing. She would like to thank her mom, her brother, Erwyn, Trooper, Ariel, Juliet, Lexi and Mrs. Tobiason. She hopes you enjoy the show.

SYDNEY WOODWARD (Donatella/Ensemble) is a junior performing in her third musical. She plays the role of Donatella McDonnough. Besides the musical, she participates in tech crew during the fall play. She hopes you enjoy the show!

BEN YODZIS (Tech) is a senior and has been on the lighting crew for 4 years, including 7 theatrical productions and 8 dance concerts. He plans on staying involved with theatrical lighting in college while studying English Education and hopes to teach in Howard County after earning his Master's degree.



Riley & Kaylee:
From playing
with Legos to
breaking a leg in
the play, we
always knew you
were destined
for great things...
Break a Leg-o!!!

Emma, you're totally righteous and your voice is
bodacious to the max! You rock and we love you!
Mom, Dad, Molly, Caroline and Ginny



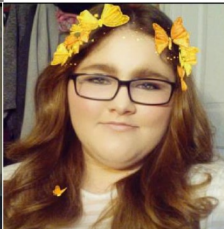


****Congratulations****

Senior Kaylee Wisdom
on your final
Hammond HS production...
always a character!

We are proud of you and
look forward to everything
you will accomplish beyond
high school...
keep the songs in your heart
and never stop singing!

Love You Always!
Mom, Anthony, Erwyn, Jew,
Ariel, and Trooper



Congratulations Katie!

From Glinda to Maria, Jasmine, Mulan and everything in between you're always a joy to watch on the stage and we can't wait to see you as Julia in The Wedding Singer!

Love- Mom, Dad & Michael



Congrats to Ben Yodzis and the Tech Crew on another great year!



The Yodzis Family

Director's Notes

Welcome to Ridgefield, New Jersey, 1985, where hair is big, clothes are bright, and weddings are a spectacle of pastel and tulle! Ronald Reagan has just been elected to his second term in office, Coca-Cola has tried to "improve" its recipe with New Coke, and Compact Discs are now available to American consumers! This is the year of *The Goonies*, *Back to the Future*, and *The Breakfast Club*, and movie tickets are just \$2.75.

The Wedding Singer: The Musical both idealizes and satirizes the 1980s in a way that takes some of us on a very vivid walk down memory lane. This show opened on Broadway in 2006 and earned a TONY nomination for best musical. While it is based on the hit 1998 Adam Sandler movie and the plot is mostly the same, the songs (with the exception of "Somebody Kill Me" and "Grow Old With Me") are all part of a catchy original score.

This cast, crew, and production team have been a blast to collaborate with; over the past three months we've made our way through (metaphorical) dumpsters, learned some important lessons, and laughed ourselves silly. A theatre production, like a wedding, is about celebrating a union. We are grateful that you're here today to witness our union of song, dance, and wacky characters, and enjoy a sweet story with plenty of heart.

~ Lauren Tobiason



Theatre Patrons

PRODUCERS

Bradley Family | Jennifer Wakefield | Luis E. Lopez | O'Rourke Family

DIRECTORS

Ken & Becky McKirahan | Gina Hendershot

STAGE MANAGERS

Ella Martin



Theatre Patron Program

The Hammond High School Theatre Department cordially invites you to become a member of our Theatre Patron Program. Your annual sponsorship will support the continued excellence of the Theatre Program at HaHS. We invite families as well as businesses to become our sponsors and help enrich this program in a way that only financial contributions can.

Your name will appear in our performance programs and on our website throughout this school year. To donate using our secure online payment system, contact Mrs. Tobiason or visit our website and click on "Support Us": www.hammondhightheatre.org.

**Hammond Theater Presents:
LEXI WAKEFIELD as Holly
In The Wedding Singer**



**5th Grade Lexi as Angel Noble
in *Angels Aware***



**11th Grade Lexi as Evilene
in *The Wiz***

8th Grade Lexi as Barbie

